

# CONTACT US TODAY

We understand the importance of open communication and value the opportunity to connect with you.

**Phone** : (716) 886-8200 ext. 2196

**Website** : [www.brylin.com](http://www.brylin.com)

**Location** : Center of Excellence  
ECT Program  
1263 Delaware Ave.  
Buffalo, NY 14209



“

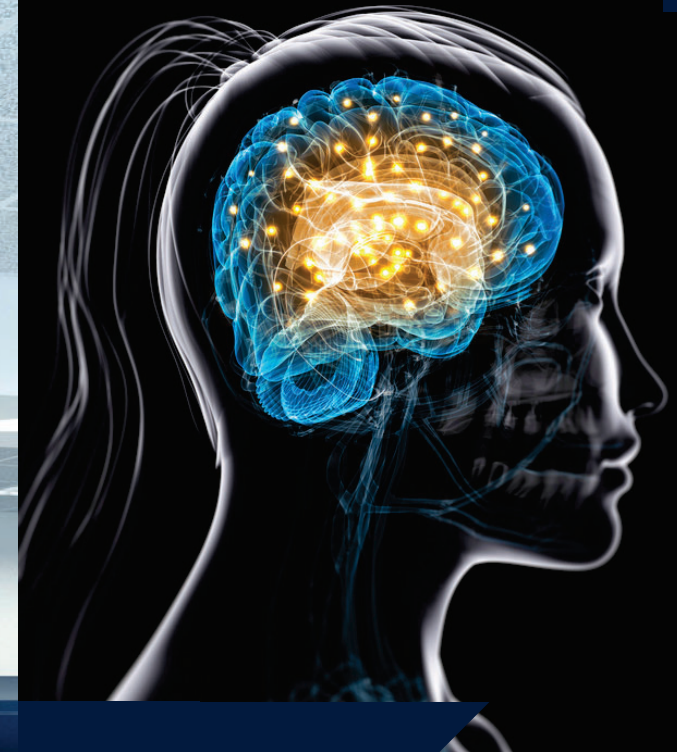
Many people are unaware that ECT is a legitimate medical procedure carried out by a team of professionals, including a qualified psychiatrist, anesthesiologist, and ECT nursing staff.

ECT is the most effective and rapidly acting, FDA approved, treatment for severe depression.

ECT can be a lifesaving treatment because it's fast acting and effective, even when other treatments fail.



**SANJAY GUPTA, MD**  
Chief Medical Officer



**Center of  
Excellence**  
Electroconvulsive Therapy

# ABOUT ECT:

## How does it work?

The ECT procedure involves electrical stimulation to the brain while a person is under anesthesia. A controlled seizure is induced to improve the chemical pathways in the brain that effect mood and behavior.

During the procedure, an anesthesiologist provides a general anesthesia medication, airway management, and knowledgeable guidance. A highly experienced physician determines the proper amount of stimulation and duration of the seizure.

Recipients receive 6-12 treatments over a 4-5 week period. Some people may see their symptoms improve as early as week two.

*ECT's effectiveness in treating severe mental illnesses is recognized by the American Psychiatric Association, the American Medical Association, the National Institute of Mental Health, and similar organizations in other countries.*

# IS ECT FOR YOU?

ECT is a very effective treatment for people suffering from major depression and other severe mental illnesses, such as bipolar disorder and schizophrenia. It's also used for people who require a rapid treatment response because of the severity of their condition, such as being at risk for suicide.

*\*Clinical evidence indicates that for individuals with uncomplicated, but severe major depression, ECT will produce substantial improvement in approximately 80 percent of patients.*

*\*American Psychiatric Association*

ECT is typically used when other treatments, including medications and psychotherapy, haven't worked.

**To learn more or to make a referral, please call the ECT Department at (716) 886-8200 ext. 2196.**



## • Our ECT Team

Our compassionate team of highly trained specialists will work closely with you and your family to provide the very best care possible.

## • Insurances

Most major insurances are accepted. We will check your benefits for you.

## • Referrals

Pre-ECT clearances can be handled by our team for your convenience.