

CONTACT US TODAY

We understand the importance of open communication and value the opportunity to connect with you.

Phone : (716) 886-8200 ext. 2196

Website : www.brylin.com

Location : Center of Excellence
ECT Program
1263 Delaware Ave.
Buffalo, NY 14209



“

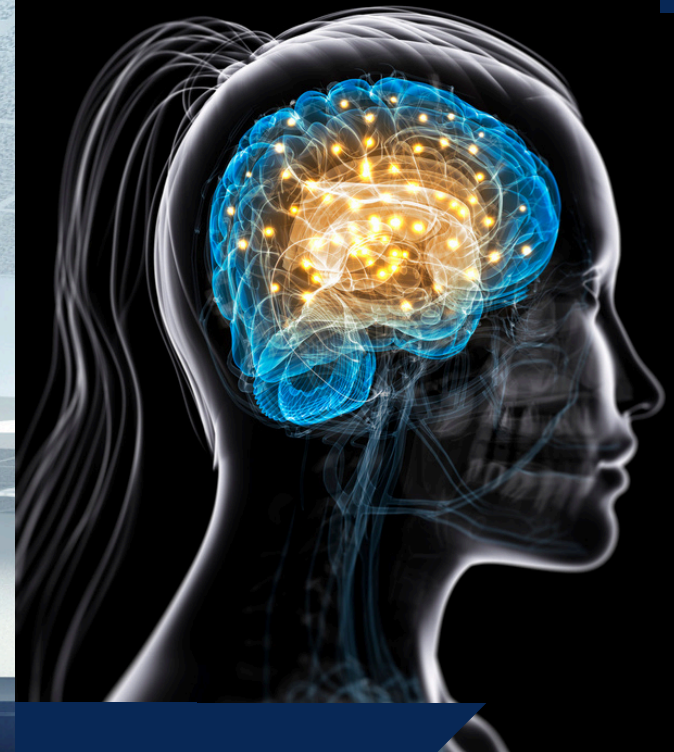
Many people are unaware that ECT is a legitimate medical procedure carried out by a team of professionals, including a qualified psychiatrist, anesthesiologist, and ECT nursing staff.

ECT is the most effective and rapidly acting, FDA approved, treatment for severe depression.

ECT can be a lifesaving treatment because it's fast acting and effective, even when other treatments fail.



SANJAY GUPTA, MD
Chief Medical Officer



**Center of
Excellence**
Electroconvulsive Therapy

ABOUT ECT:

How does it work?

The ECT procedure involves electrical stimulation to the brain while a person is under anesthesia. A controlled seizure is induced to improve the chemical pathways in the brain that effect mood and behavior.

During the procedure, an anesthesiologist provides a general anesthesia medication, airway management, and knowledgeable guidance. A highly experienced physician determines the proper amount of stimulation and duration of the seizure.

Recipients receive 6-12 treatments over a 4-5 week period. Some people may see their symptoms improve as early as week two.

ECT's effectiveness in treating severe mental illnesses is recognized by the American Psychiatric Association, the American Medical Association, the National Institute of Mental Health, and similar organizations in other countries.

IS ECT FOR YOU?

ECT is a very effective treatment for people suffering from major depression and other severe mental illnesses, such as bipolar disorder and schizophrenia. It's also used for people who require a rapid treatment response because of the severity of their condition, such as being at risk for suicide.

**Clinical evidence indicates that for individuals with uncomplicated, but severe major depression, ECT will produce substantial improvement in approximately 80 percent of patients.*

**American Psychiatric Association*

ECT is typically used when other treatments, including medications and psychotherapy, haven't worked.

To learn more or to make a referral, please call the ECT Department at (716) 886-8200 ext. 2196.



• Our ECT Team

Our compassionate team of highly trained specialists will work closely with you and your family to provide the very best care possible.

• Insurances

Most major insurances are accepted. We will check your benefits for you.

• Referrals

Pre-ECT clearances can be handled by our team for your convenience.